

COMPANY PROFILE

Jiangxi Yatech Materials Co., Ltd. It is a high-tech enterprise with more than 15 years of experience in the development of precision multi-station progressive dies.

The company has a total of more than 35 employees, 18 professional and technical personnel, Over the years, it has been unremittingly providing high-quality stamping dies and stamping products for various manufacturing enterprises.

The company has precision processing and testing equipment: Swiss AGE Charmilles, Japan Sodick, Japan Mitsubishi slow wire cutting wire cutting machine, Japan Vacino optical curve grinder, Japan Mitsui forming curve grinder, Japan Sodick mirror spark machine tool, American Moore, Switzerland Hauzer continuous path coordinate grinding machine, Swiss Mikron machining center. Japan's Okamoto high-precision surface grinder, Japan's high-precision three-coordinate measuring instrument, Japan's Mitutoyo QV measuring instrument, Japan's Mitutoyo profile measuring instrument, etc.

We have rich experience in lead frame progressive die, lithium battery shell drawing die, motor iron core progressive die, etc.

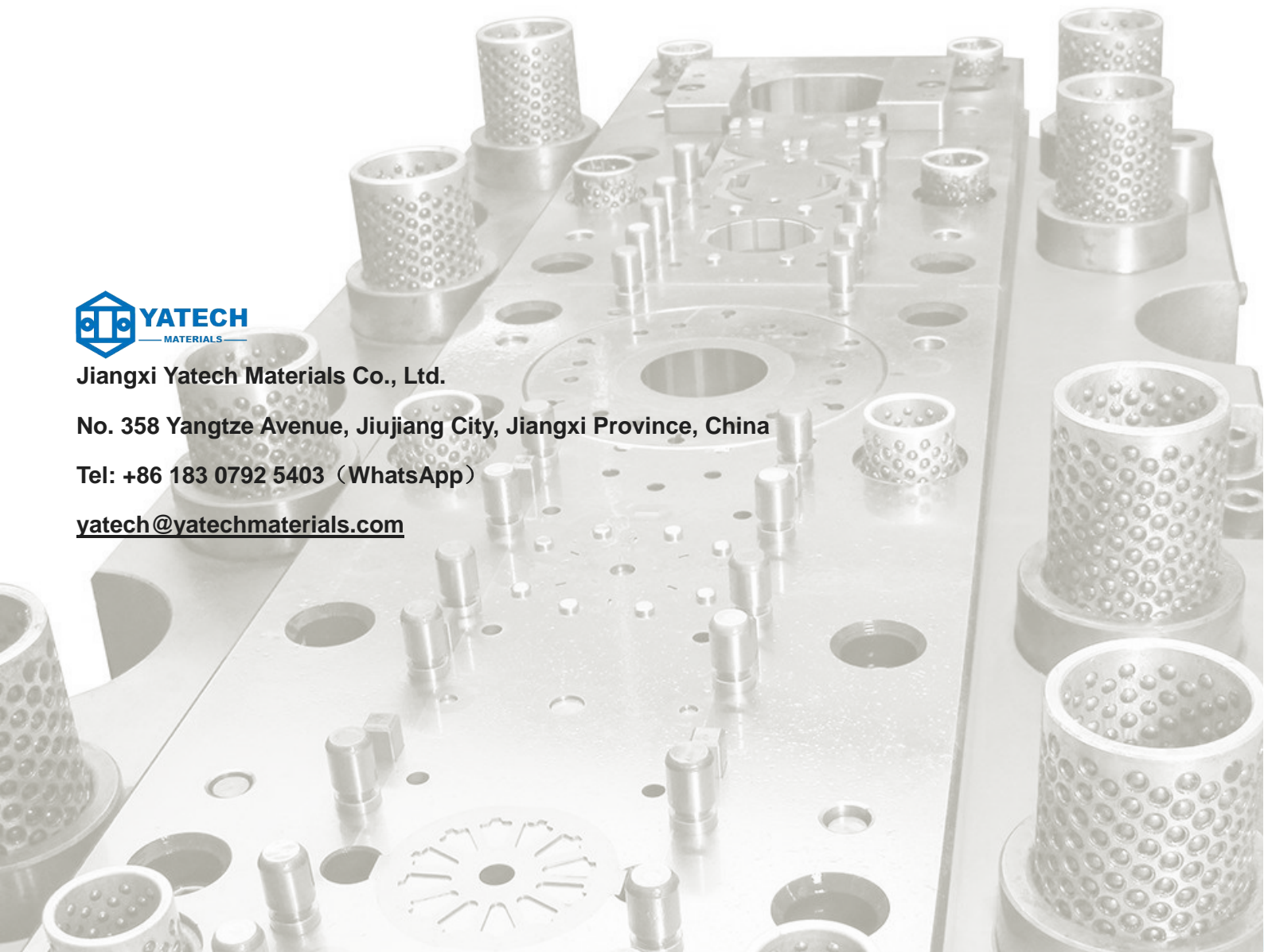


Jiangxi Yatech Materials Co., Ltd.

No. 358 Yangtze Avenue, Jiujiang City, Jiangxi Province, China

Tel: +86 183 0792 5403 (WhatsApp)

yatech@yatechmaterials.com



Show of power



▲ A partial view of the slow walking silk workshop

Equipment introduction: There are 8 machine tools from Sodick, Mitsubishi Electric and AgieCharmilles. The machining accuracy can reach $\pm 1\mu\text{m}$, and the surface roughness can reach Ra 0.05. It can process grooves with a minimum of 0.10mm and internal fillets with a radius of 0.05. Processing, with dozens of experienced processing technicians, can fully guarantee the processing accuracy and surface finish of the mold.



▲ Microporous machine workshop

There are 3 micro-hole processing machine tools, which can process the smallest micro-hole $\phi 0.07\text{mm}$. It can automatically perforate 100 holes, and the position and size accuracy can reach $\pm 0.005\text{mm}$. With dozens of experienced processing technicians, it can continuously improve the perforation position and cavity accuracy.



▲ Precision EDM workshop

There are 6 EDM machines for rough, fine and mirror surfaces, and the surface finish is below 0.2um, which can achieve the mirror reflection effect. Used for precision machining of complex mold cavities, especially complex curved surfaces that are inconvenient for polishing operations.



▲ High precision CNC machining machine

There are 3 precision machining centers and domestic machining centers, the processing progress can reach 0.01mm, and the roughness Ra0.4. With dozens of experienced processing technologies, it can continue to ensure the size and position accuracy of mold processing.



▲ Small flat grinding workshop

There are 10 hand-cranked, semi-automatic and automatic grinders with a machining accuracy of $\pm 0.001\text{mm}$. With dozens of experienced processing technicians, it can ensure the dimensional accuracy of mold parts.



▲ Mitsui Forming Curve Grinder

It has 3 sets of Wasino optical curve grinders and 2 sets of Mitsui forming curve grinders. With dozens of experienced processing technicians, we can continuously improve the surface quality of the mold. Processing accuracy: $\pm 0.001\text{mm}$, minimum inner R angle: $R0.02\text{mm}$, minimum outer R angle: 0.015mm , the thinnest part of the special-shaped punch can reach 0.06mm .



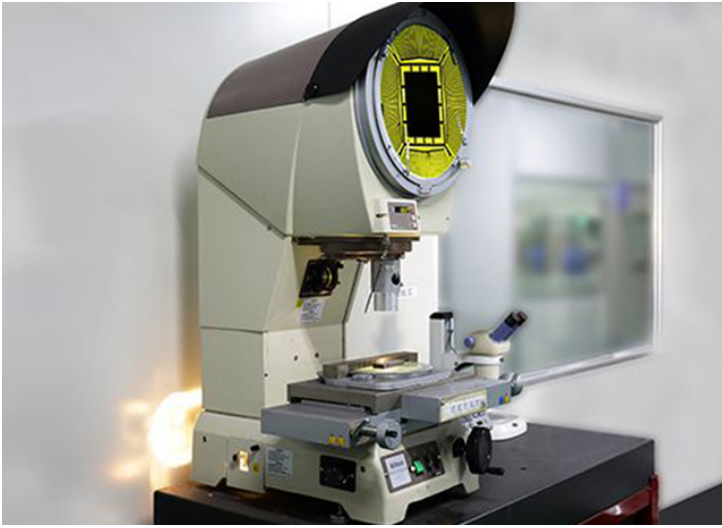
▲ CNC workshop

There are 13 precision machining centers and domestic machining centers, the processing progress can reach 0.01mm, and the roughness Ra0.4. With dozens of experienced processing technologies, it can continue to ensure the size and position accuracy of mold processing.



▲ Mitutoyo High Precision Profiler

With precision three-coordinate measuring instrument, universal tool microscope, two-dimensional QV measuring instrument, profile meter, various u-level micrometers, roughness meters, etc., dozens of professional quality personnel strictly follow technical standards and operating specifications, from incoming inspection, Process inspection, mold trial verification to shipment inspection are meticulous, and comprehensively guarantee the dimensional accuracy, step accuracy, and surface roughness of each part of the mold.



▲ Nikon projector



▲ Nikon High Precision Universal Microscope



▲ Japan high-precision QV two-dimensional measuring instrument

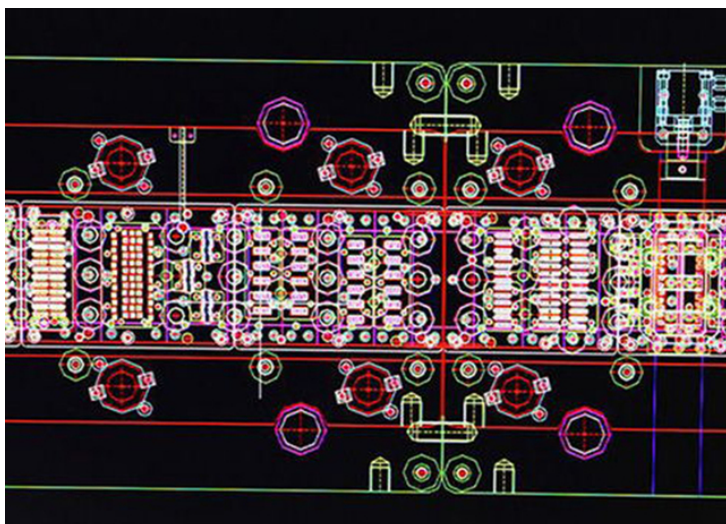
With precision three-coordinate measuring instrument, universal tool microscope, two-dimensional QV measuring instrument, profile meter, various u-level micrometers, roughness meters, etc., dozens of professional quality personnel strictly follow technical standards and operating specifications, from incoming inspection, Process

inspection, mold trial verification to shipment inspection are meticulous, and comprehensively guarantee the dimensional accuracy, step accuracy, and surface roughness of each part of the mold.



▲ Japan's Mitutoyo High Precision Coordinate Measuring Machine

With precision three-coordinate measuring instrument, universal tool microscope, two-dimensional QV measuring instrument, profile meter, various u-level micrometers, roughness meters, etc., dozens of professional quality personnel strictly follow technical standards and operating specifications, from incoming inspection, Process inspection, mold trial verification to shipment inspection are meticulous, and comprehensively guarantee the dimensional accuracy, step accuracy, and surface roughness of each part of the mold.



▲ Senior designer mold design

We has experienced technical personnel, focusing on technology research and new product development, using advanced professional progressive mold design software, which can realize computer-aided mold design and calculation, and complete mold design quickly and accurately. Effectively improve mold design efficiency and shorten design cycle. All molds are led by senior designers, which can meet the requirements of high punching times, high precision, and ultra-long stability.